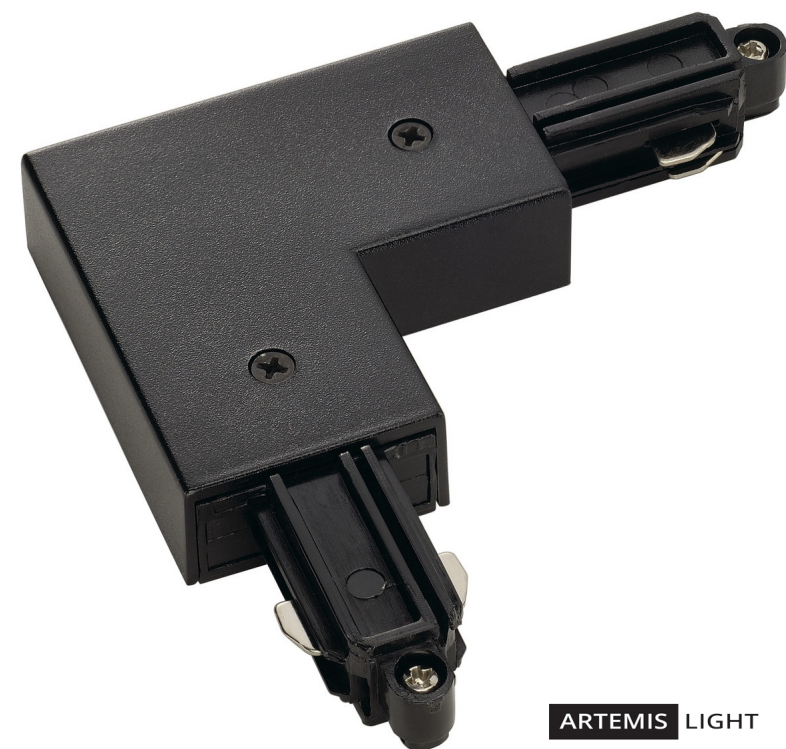


1ph Track Acc. CORNER CONNECTOR for high-voltage surface-mounted track, BLACK, earth electrode inside



SLV_143060_1_H_RGB.jpg



1ph Track Acc. CORNER CONNECTOR for high-voltage surface-mounted track, BLACK, earth electrode inside

Rating: Not Rated Yet

Price

Base price with tax 19,24 €

Price with discount 15,52 €

Salesprice with discount

Sales price 19,24 €

Sales price without tax 15,52 €

Discount

Tax amount 3,72 €

[Ask a question about this product](#)

Manufacturer [SLV](#)

Specification

Corner connector with feed capability for the 1-phase high-voltage surface-mounted track system. Available in various colour versions, you can also choose the ground conductor's position left or right depending on your individual installation. More detailed information can be provided on request.

Technical Details:

Nominal voltage 220-240V ~50/60Hz V

Length 10.4 cm **Width** 10.4 cm **Height** 1.8 cm

IP Code IP 20

Safety class I

Assembly Surface

Color black

Reviews

There are yet no reviews for this product.