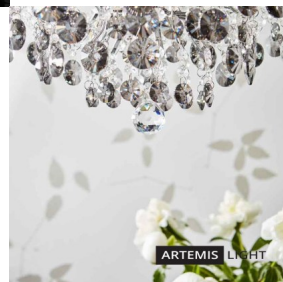
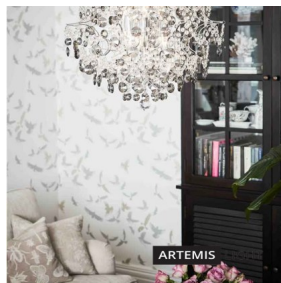


HIDDEN GEM Chandelier 3L Chrome/Clear/Smoke



107416.jpg



Designed by Tony Irving, Hidden Gem is a beautiful, modern crystal chandelier.

Rating: Not Rated Yet

Price

Base price with tax 422,84 €

Price with discount 341,00 €

Salesprice with discount

Sales price 422,84 €

Sales price without tax 341,00 €

Discount

Tax amount 81,84 €

[Ask a question about this product](#)

Manufacturer [MLG](#)

Specification

Description: Designed by Tony Irving, Hidden Gem is a beautiful, modern crystal chandelier that graces the modern home with classic crystal. Along with its clear and smoke grey crystals, Hidden Gem has a splash of colour in the middle to finish, you can vary the four available colours yourself.

We recommend: If you are looking for an even more impressive chandelier check out Tony's larger version.

Technical: Hidden Gem has three bulb holders and uses an E14 light source (narrow cap). Use a maximum 40 Watt incandescent bulb; or the equivalent in halogen, low energy or LED.

Reviews

There are yet no reviews for this product.