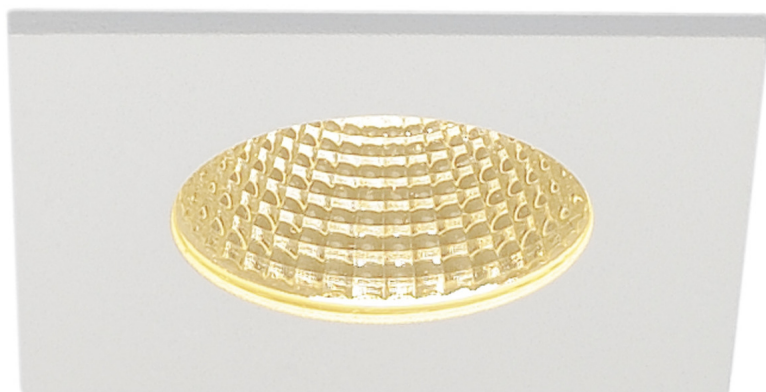


**PATTA-I, IP 20 / IP 65, recessed fitting, LED, 3000K, square, matt white, 38°, incl. driver**



ARTEMIS LIGHT

slv\_114431\_1\_h\_rgb.jpg



ARTEMIS LIGHT



ARTEMIS LIGHT

PATTA-I, IP 20 / IP 65, recessed fitting, LED, 3000K, square, matt white, 38°, incl. driver

Rating: Not Rated Yet

**Price**

Base price with tax 115,43 €

Price with discount 93,09 €

Salesprice with discount

Sales price 115,43 €

Sales price without tax 93,09 €

Discount

Tax amount 22,34 €

[Ask a question about this product](#)

Manufacturer [SLV](#)

#### Specification

The innovative PATTA I recessed fitting is suitable for ceiling thicknesses of up to 25 mm. Rated IP65 it can be used outdoors or in damp areas. This set is available in matt black, matt white, or brushed aluminium as well as in round or square form. Equipped with a powerful, warm white premium COB LED in a rigid mount, as well as the dimmable LED driver included in the scope of supply, the set can be used in any lighting situation. The electrical connection is made directly to the 230V mains supply.

#### Technical Details:

**Primary nominal voltage** 220-240V ~50/60Hz mA/V

**Secondary power / secondary voltage** 500mA

**Length** 8 cm **Width** 8 cm **Height** 4,5 cm

**Installation diameter** 6 cm **Installation depth** 6 cm

**IP Code** IP 20 / IP 65

**Safety class** II

**Assembly** Recessed

**Assembly details** Ceiling

**Dimmable** Yes **Dimming technology** Leading edge, trailing edge

**Wattage** 11 W

**Lumen** 910 lm

**Colour temperature** 3000 Kelvin

**Beam angle** 38 °

**Color** black

**CRI** 80

#### Reviews

There are yet no reviews for this product.